

NATAL

CONDOS DESIGNED TO LIVE TULUM

An aerial photograph of a lush tropical forest. In the center-right, a large, circular architectural structure is visible, featuring a complex, concentric design with a central circular area. The structure appears to be made of a woven or textured material. The surrounding forest is dense with various types of trees, including palm trees. The overall image has a muted, monochromatic color palette, likely due to a filter or the nature of the original photograph.

NATAL TULUM

PROYECTO ARQUITECTÓNICO

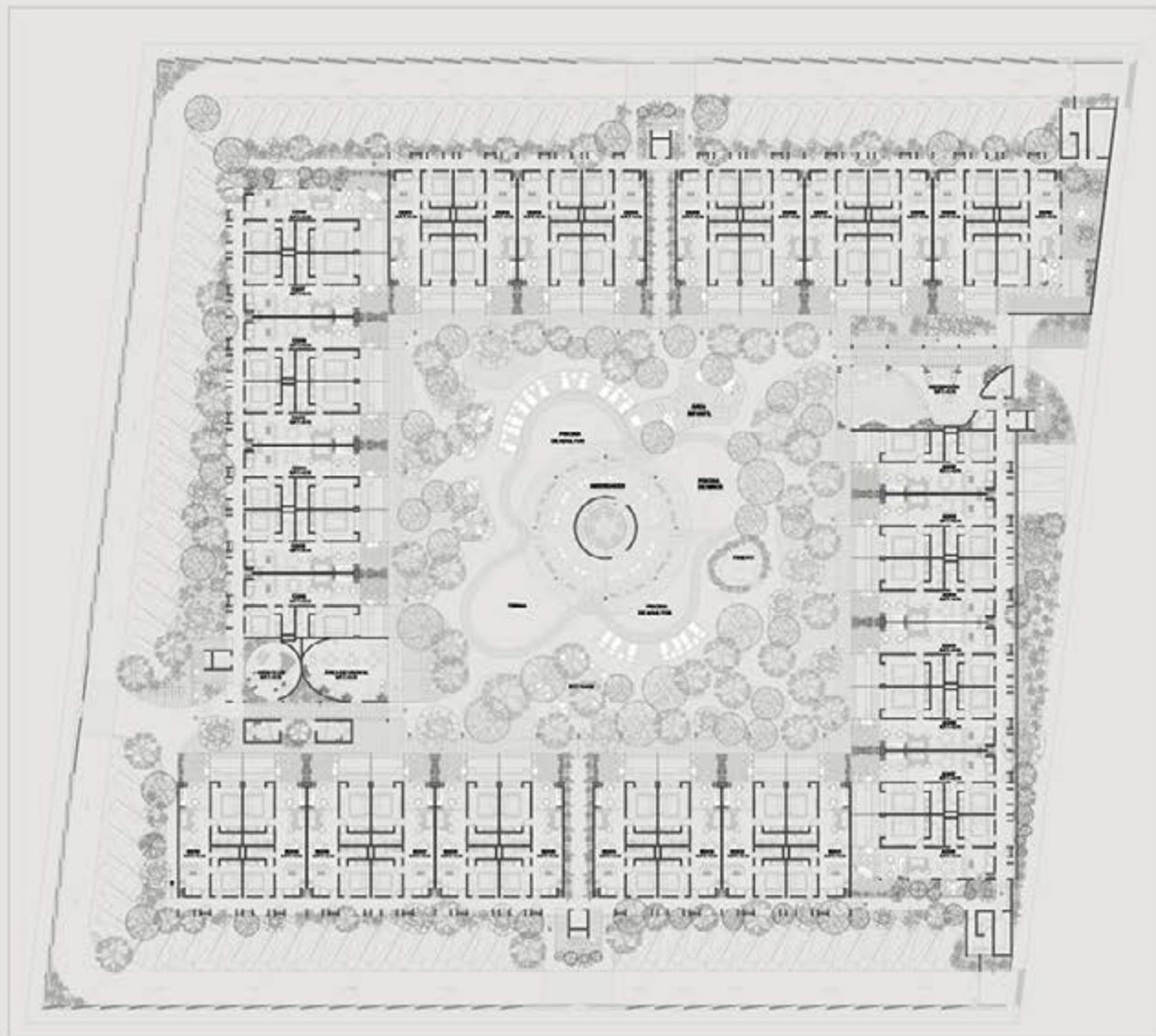


FACHADA PRINCIPAL

ACCESO



PLANTA BAJA



1,032 m² Ameniades
492 m² Andadores
1,855 m² Area Verde
262 m² Piscina



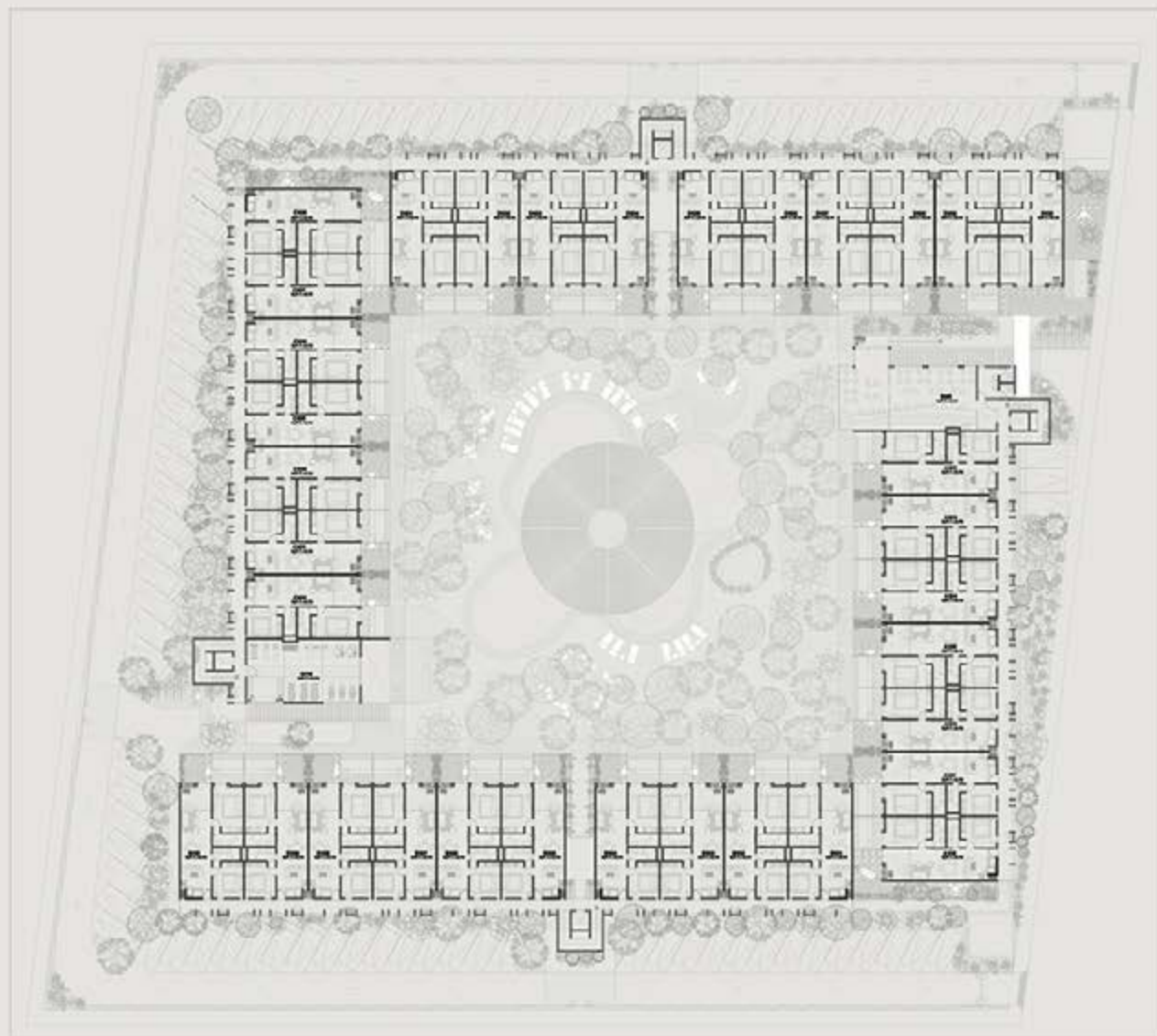
USOS MÚLTIPLES





KIDS ROOM

PRIMER NIVEL



1,032 m² Ameniades
492 m² Andadores
1,855 m² Area Verde
262 m² Piscina



BAR

GYM



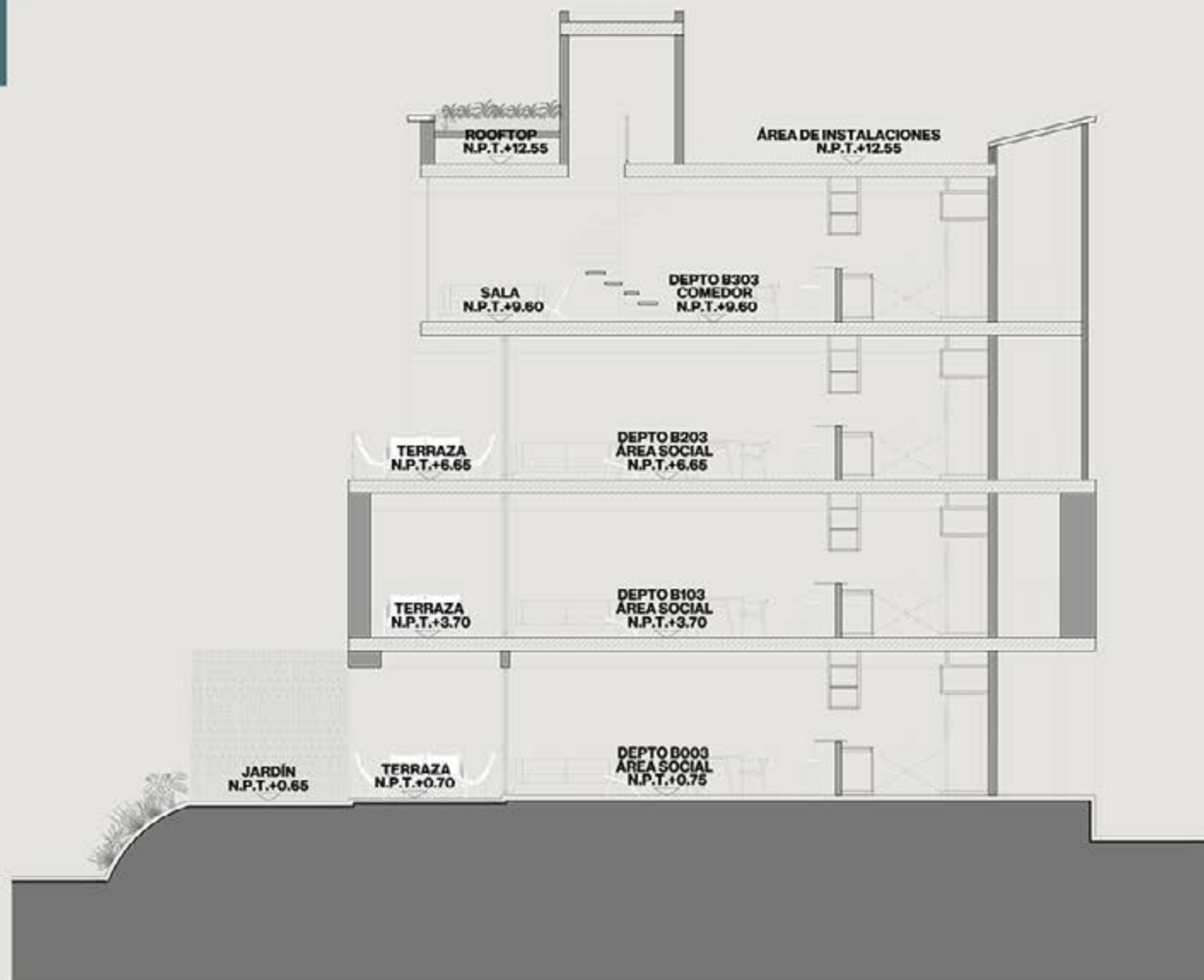


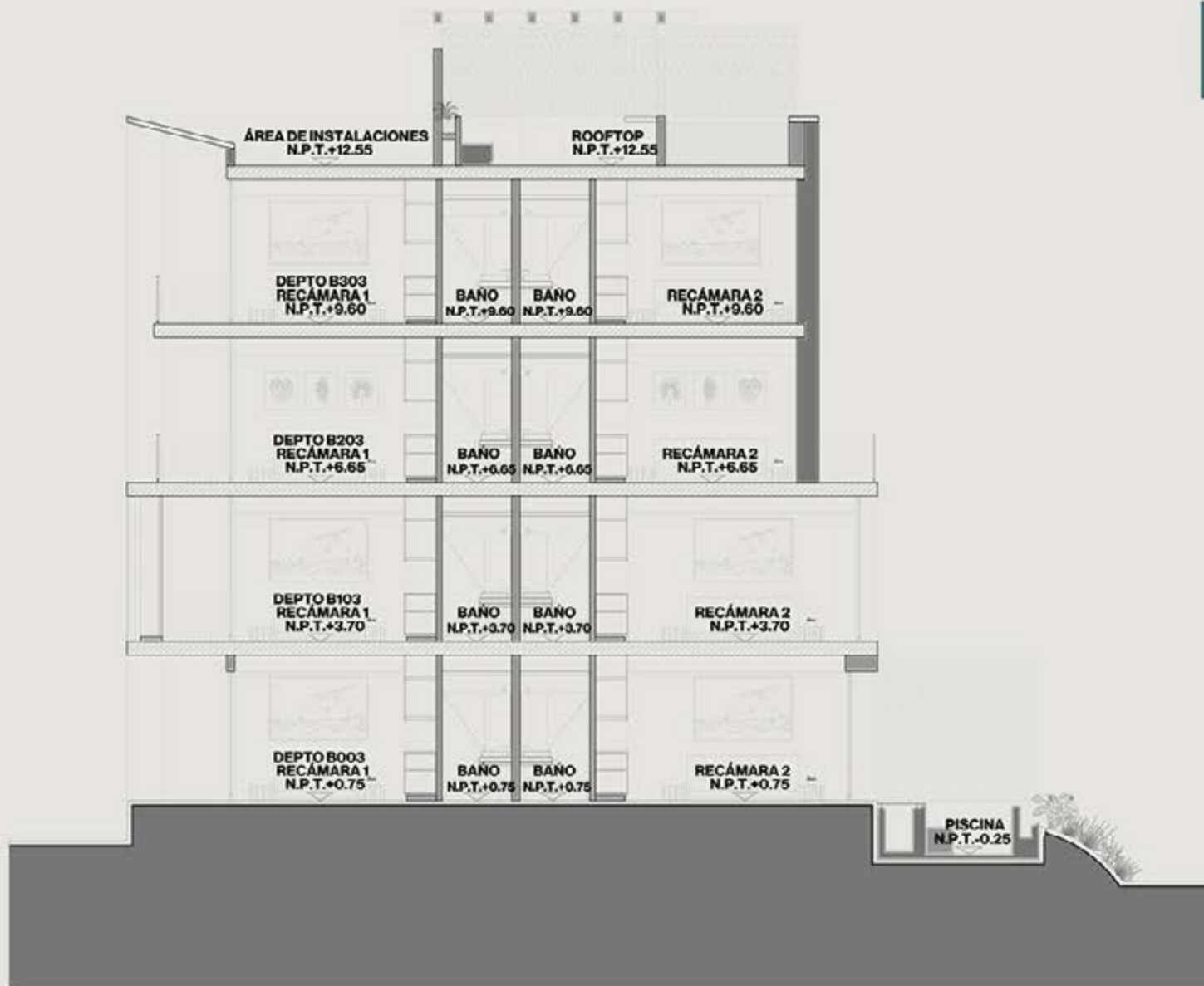
WORKSPACE

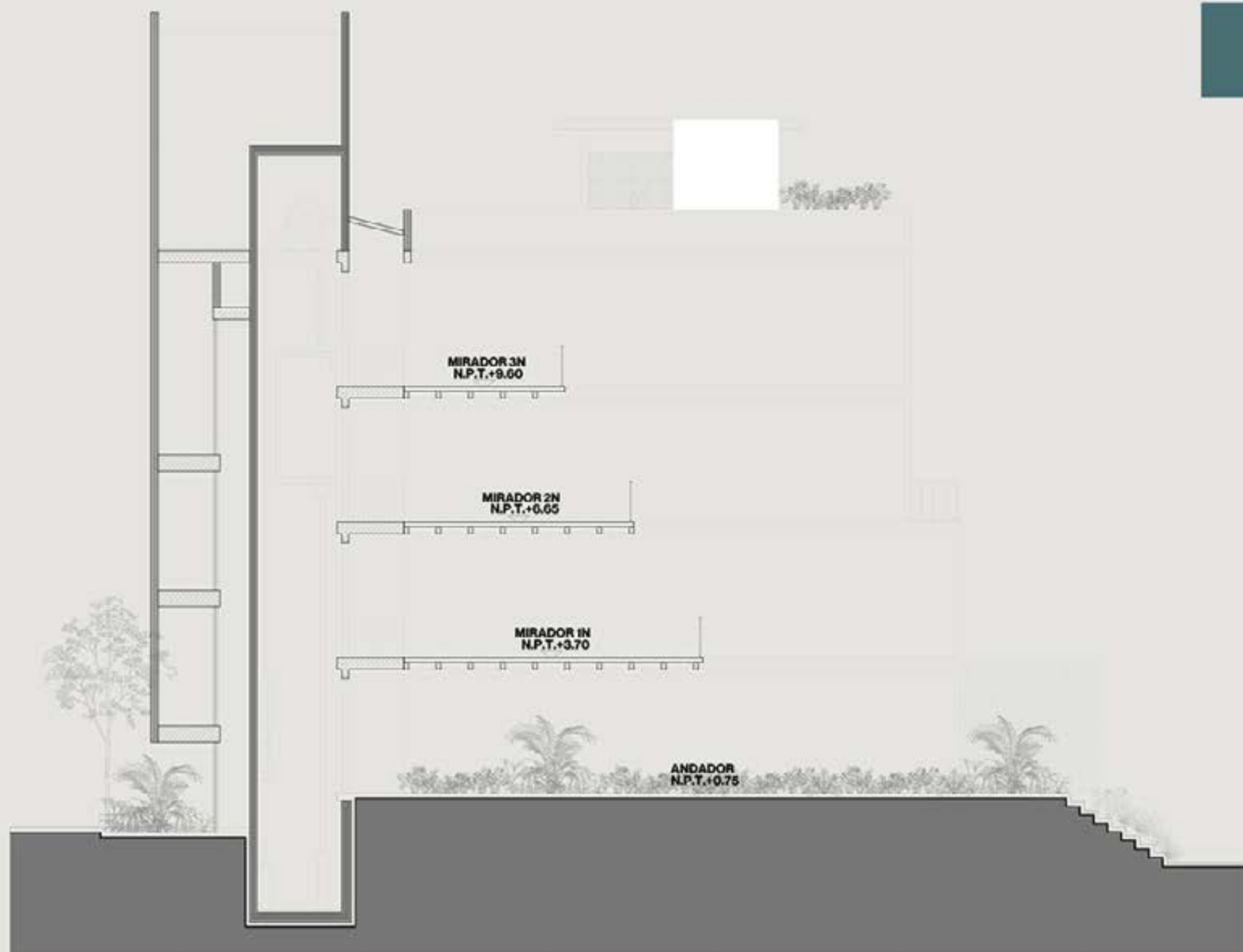
VISTA AÉREA



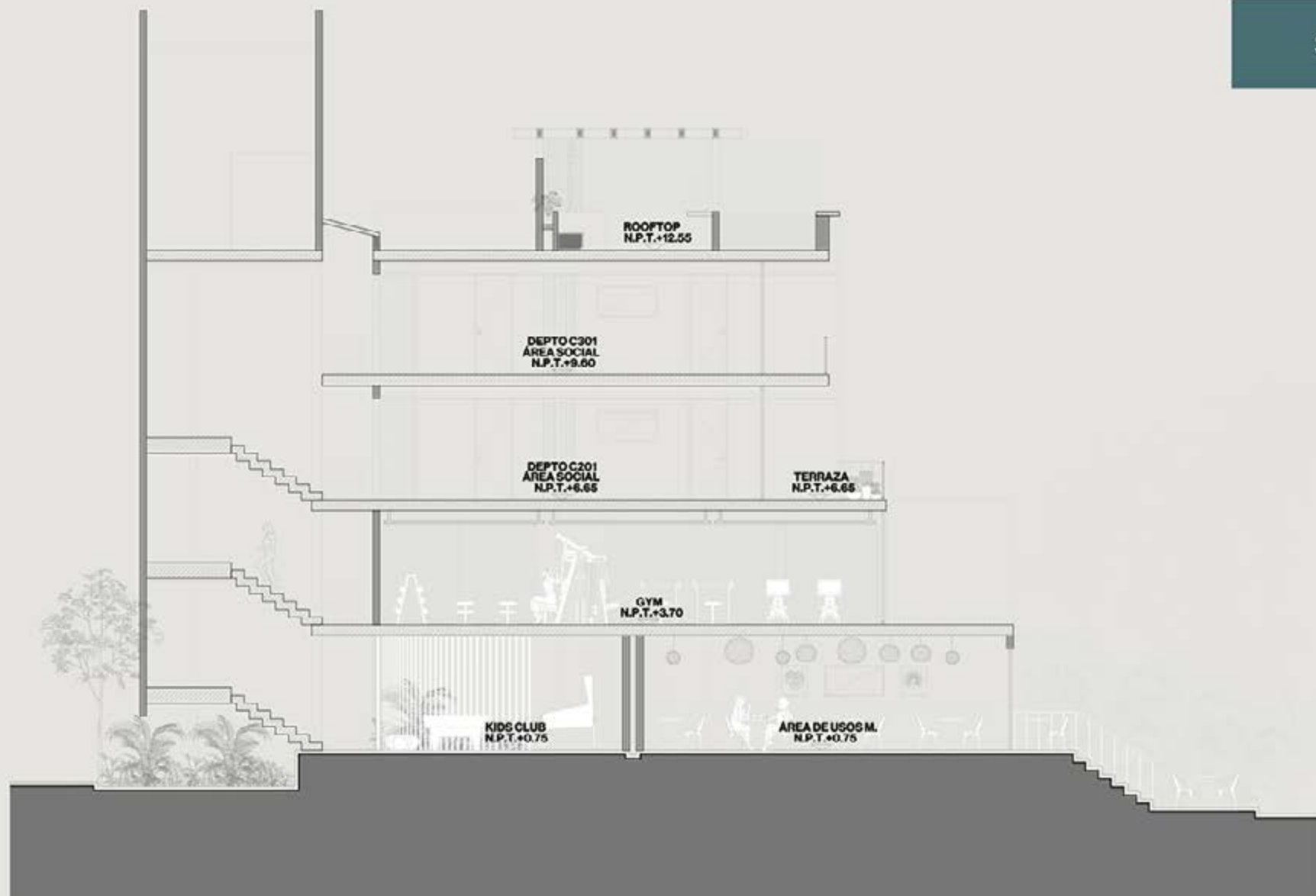
SECCIÓN A

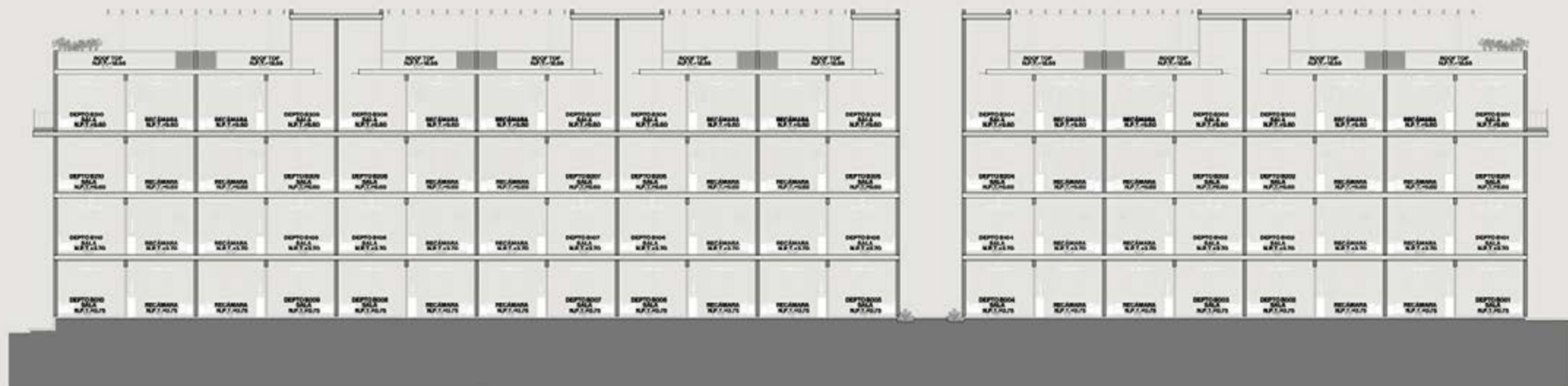


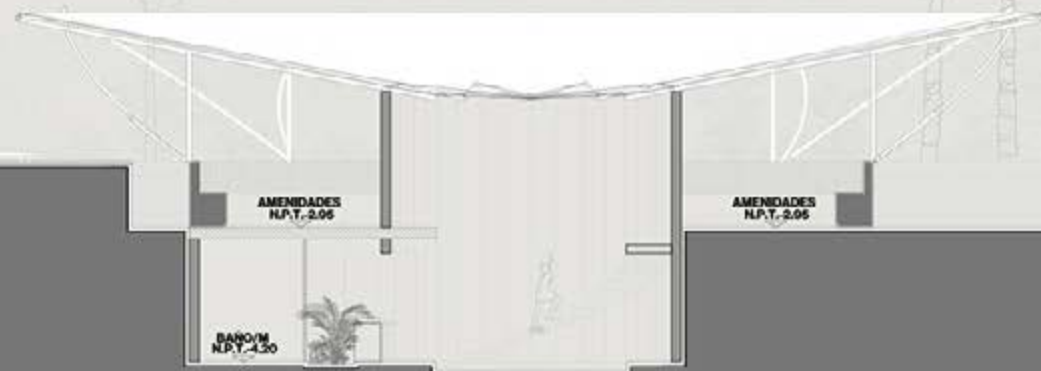
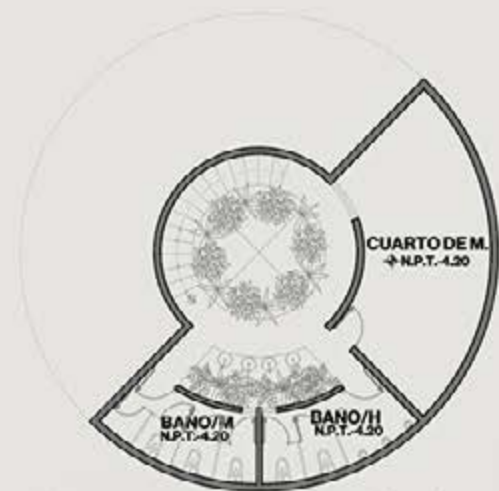




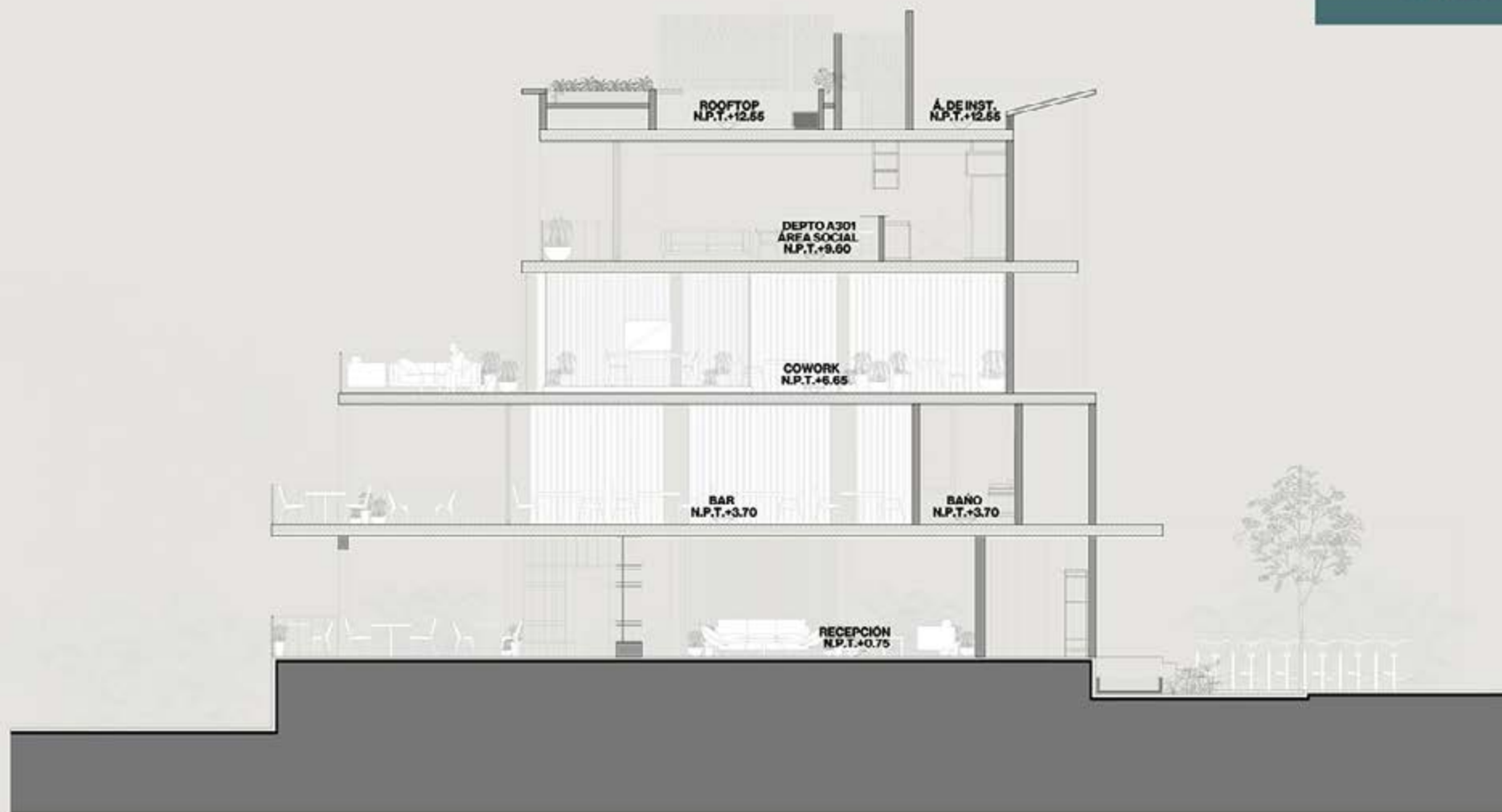
SECCIÓN D







SECCIÓN G





PATIO CENTRAL

PATIO CENTRAL



PALAPA CENTRAL





PISCINA



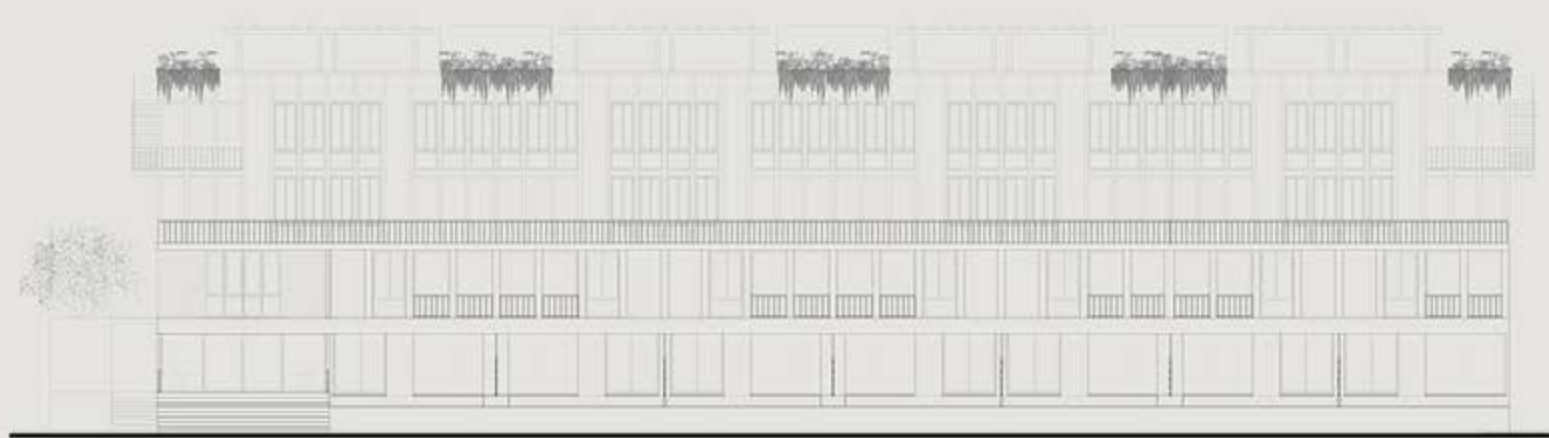
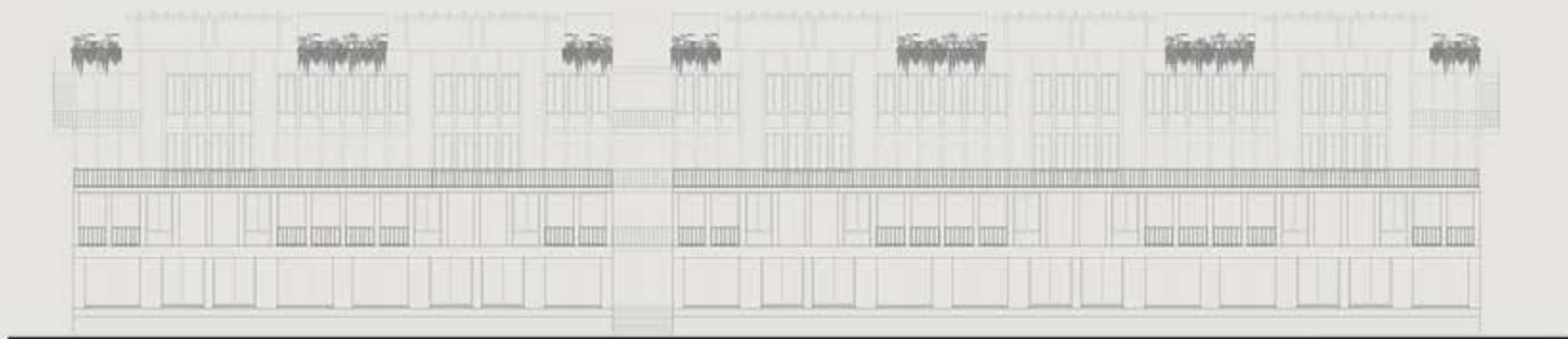


PALAPA INTERIOR

PALAPA CENTRAL







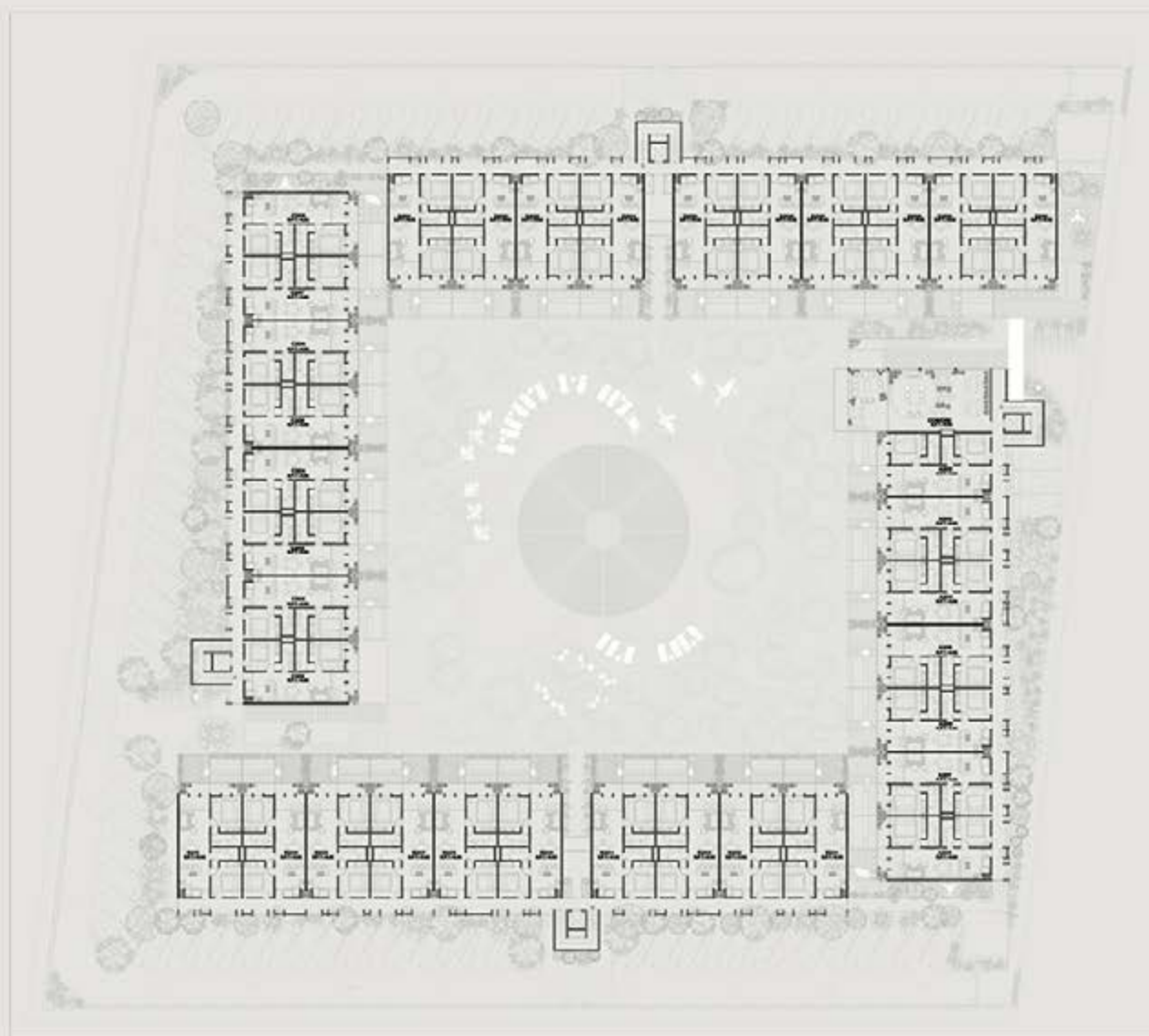
FACHADA INTERIOR



FACHADA INTERIOR



SEGUNDO NIVEL



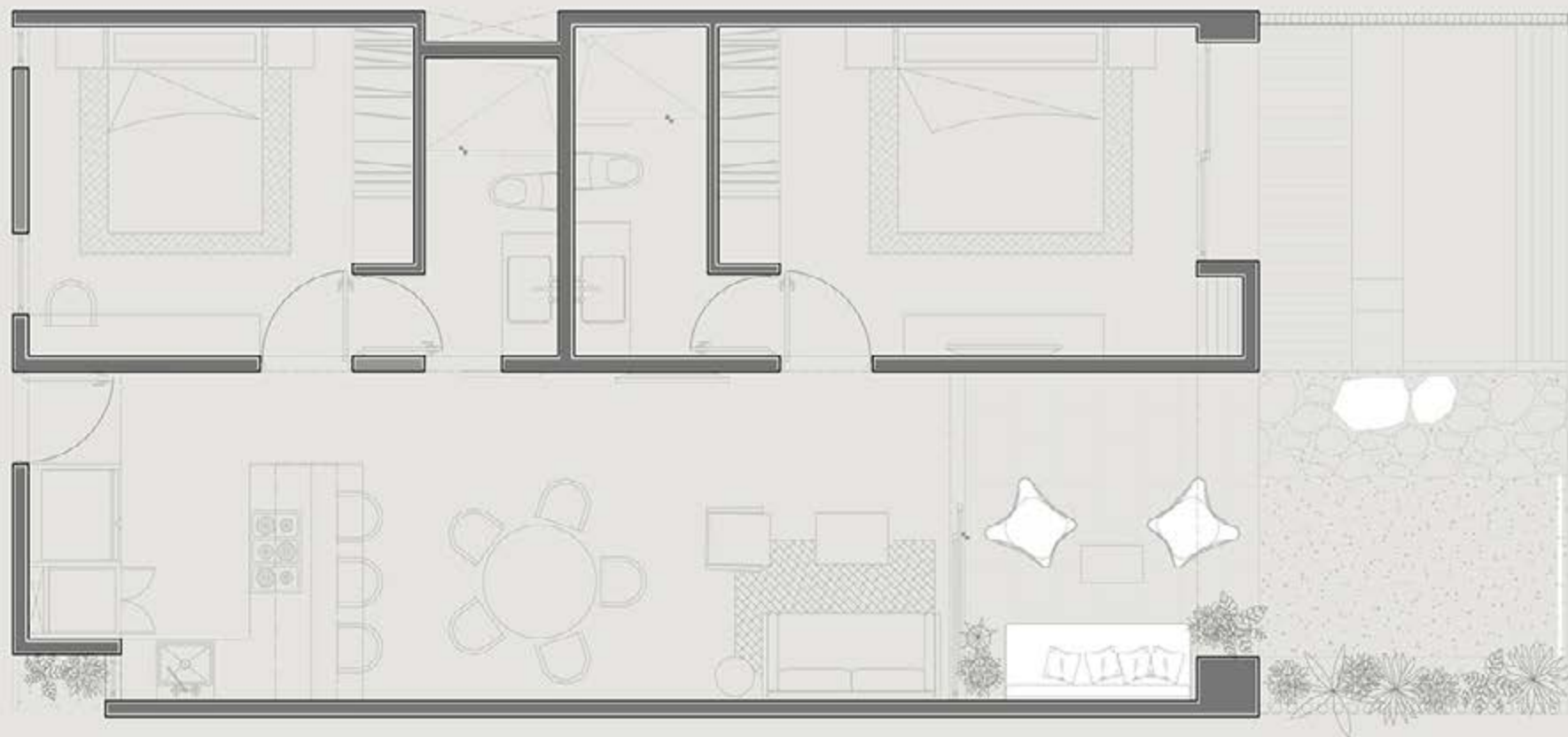
DEPARTAMENTO



DEPARTAMENTO

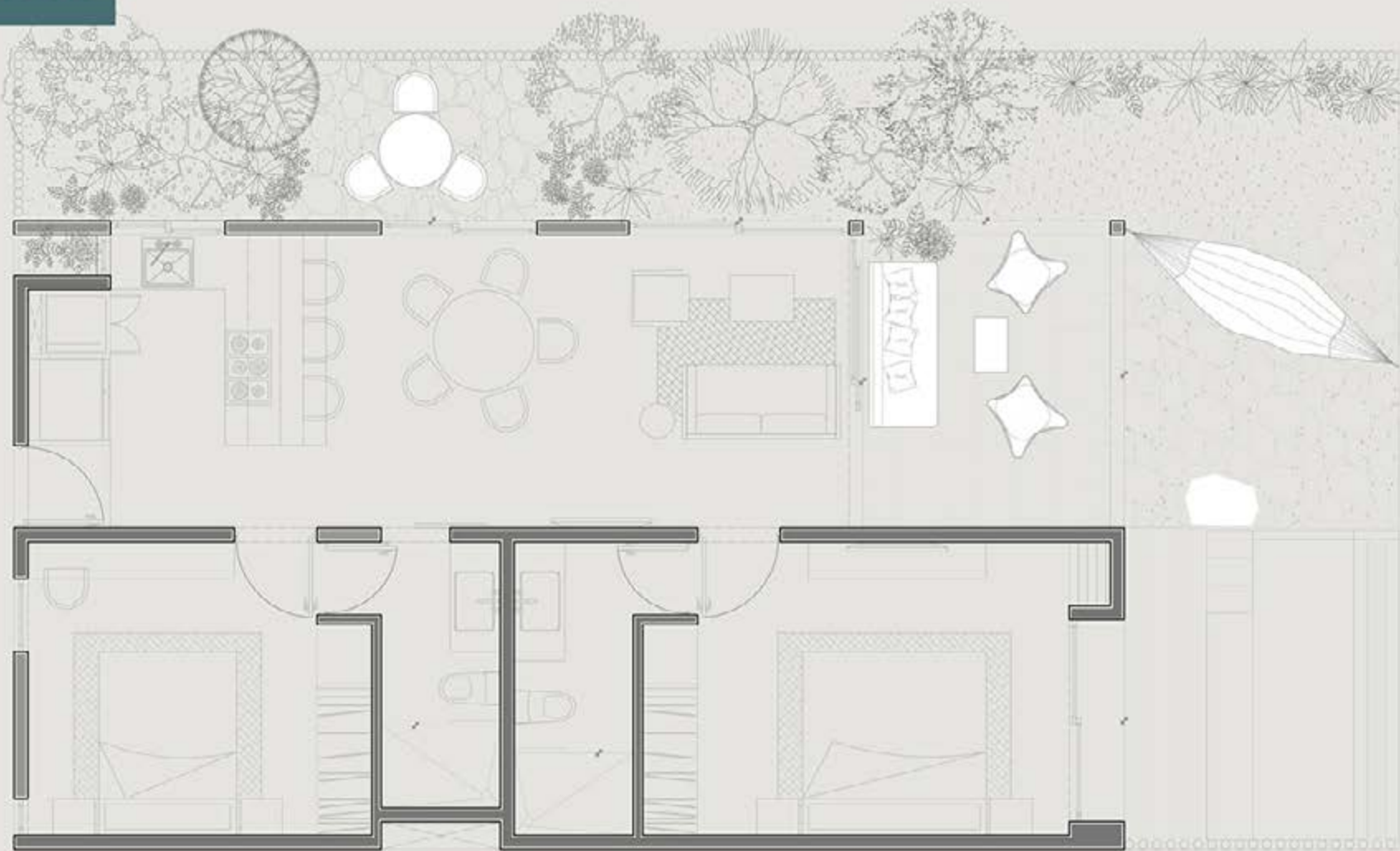


DEPARTAMENTO PB

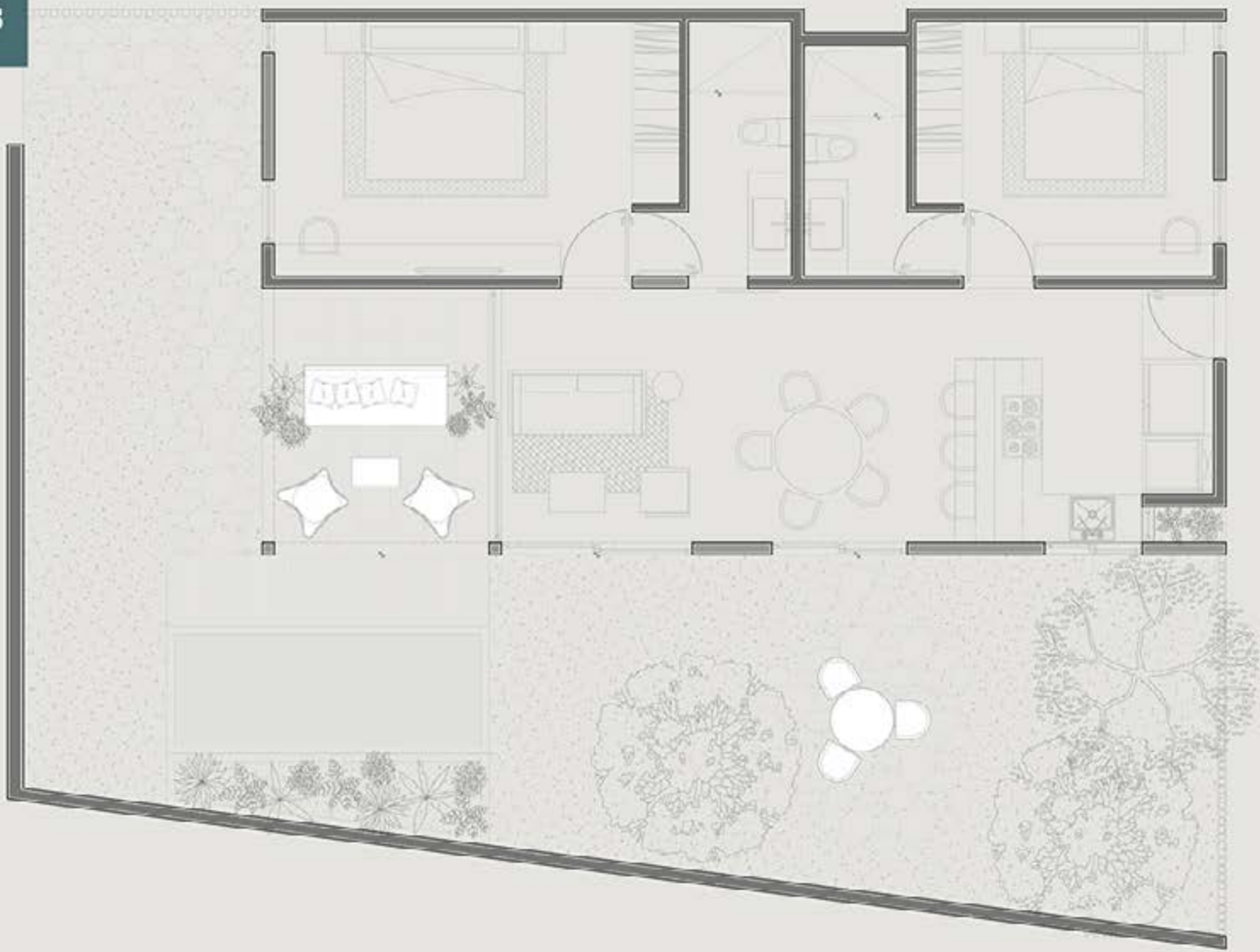


72.8 m2 Interiores
9.5 m2 Terraza Interior
48.5 m2 Terraza Exterior

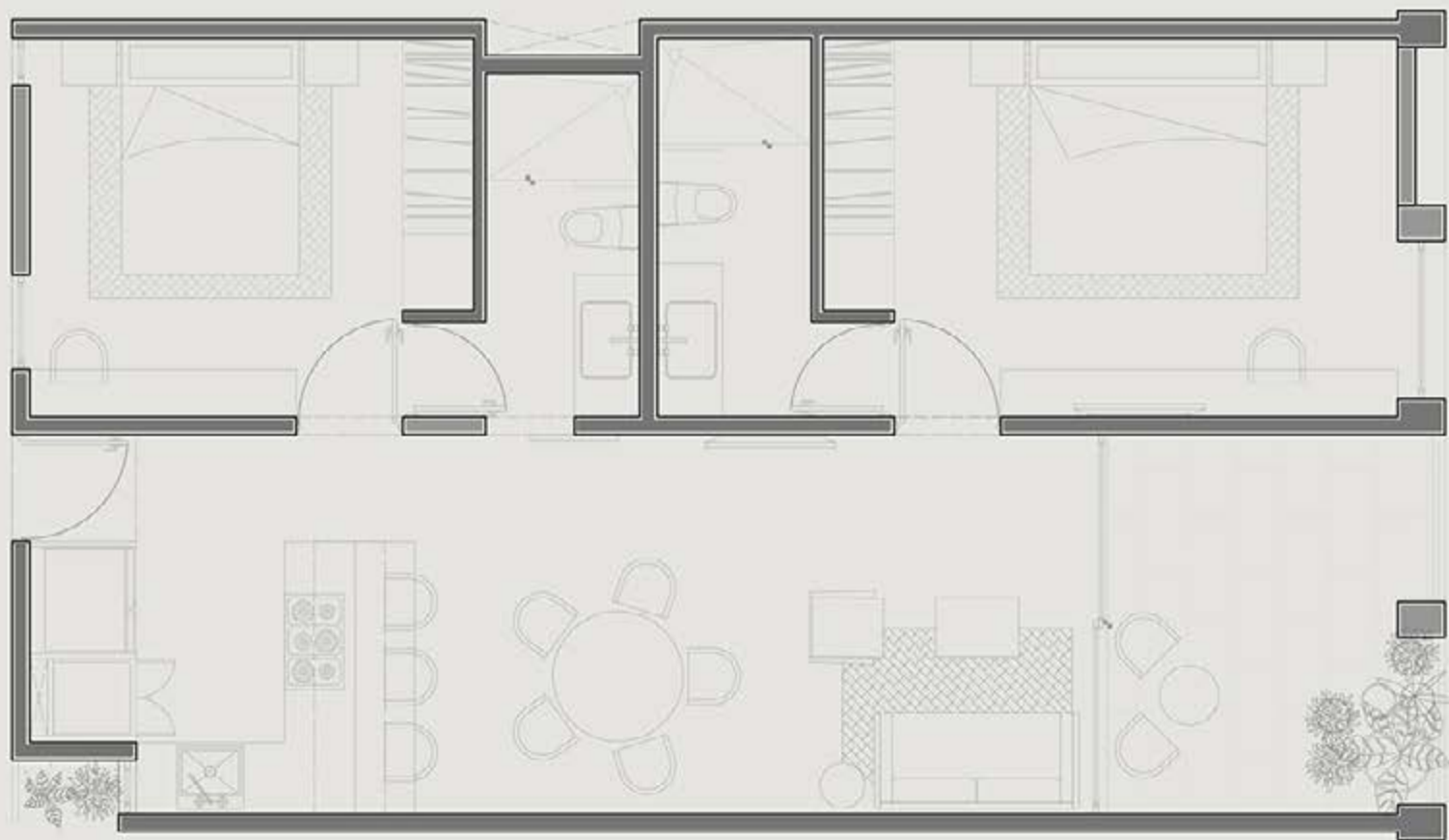
DEPARTAMENTO PB



DEPARTAMENTO PB

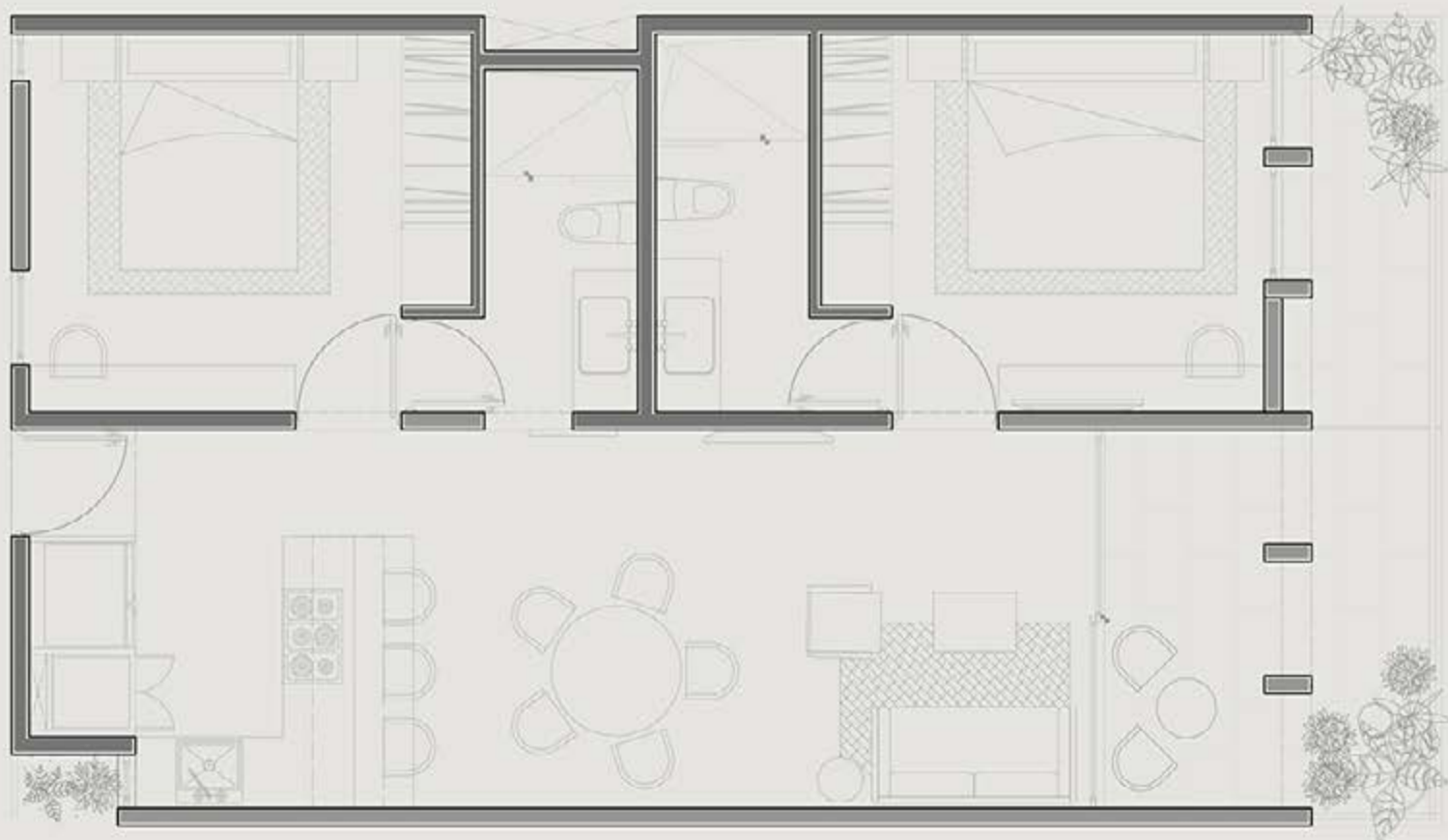


DEPARTAMENTO 1N



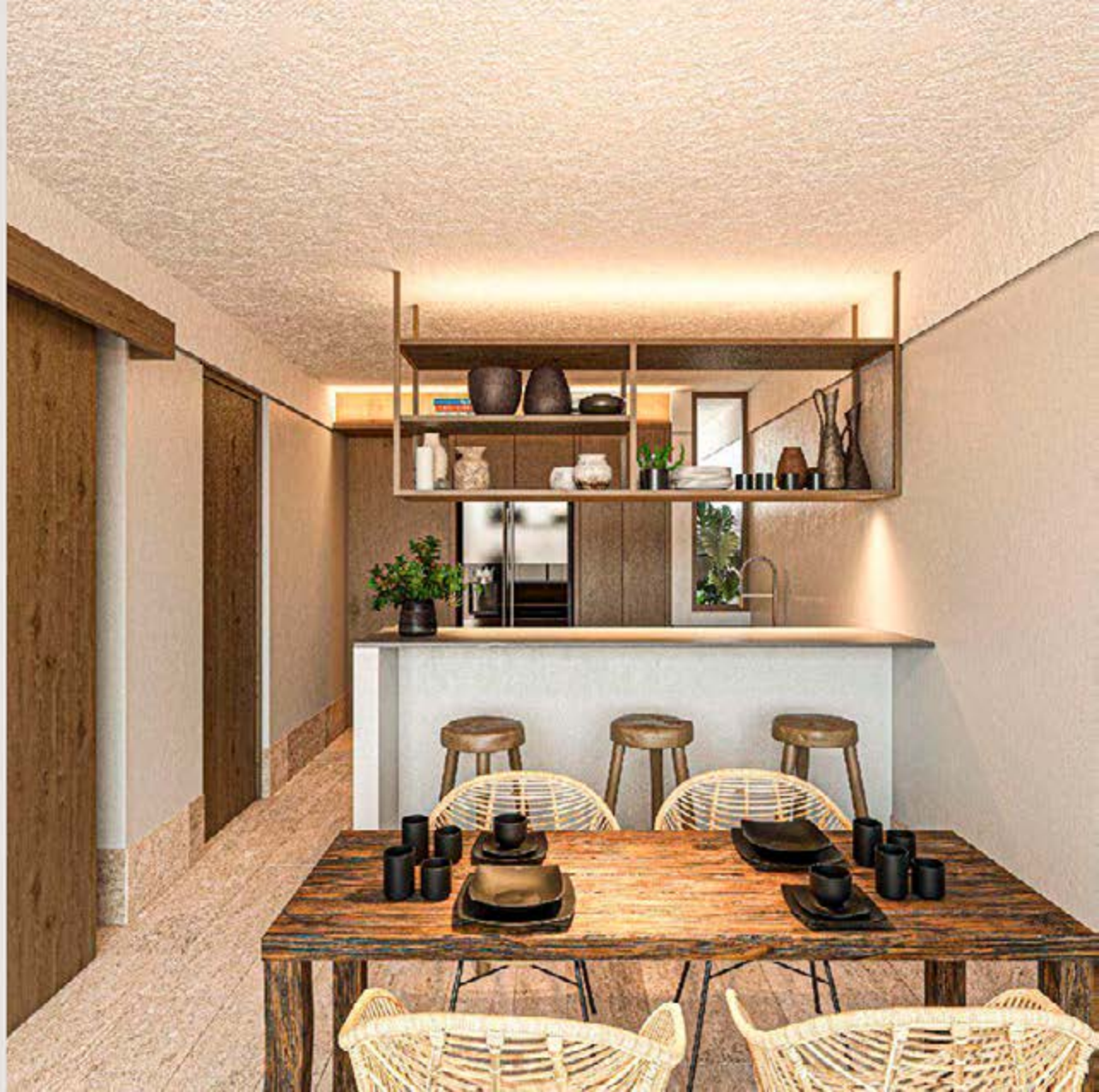
72.8 m² Interiores
9.5 m² Terraza Interior

DEPARTAMENTO 2N



67.9 m² Interiores
5.0 m² Terraza Interior
9.24 m² Terraza Exterior

DEPARTAMENTO



DEPARTAMENTO



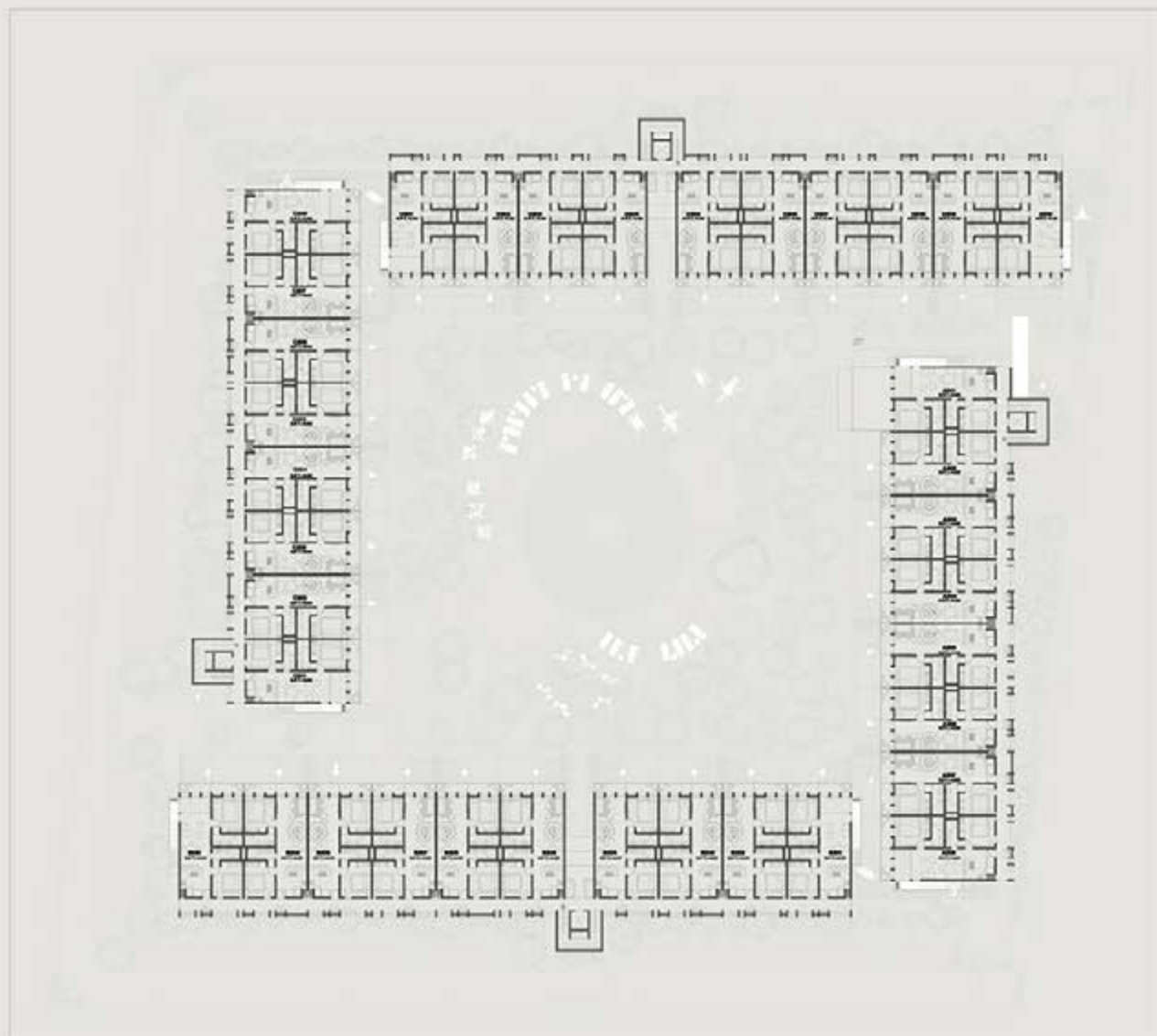
RECÁMARA



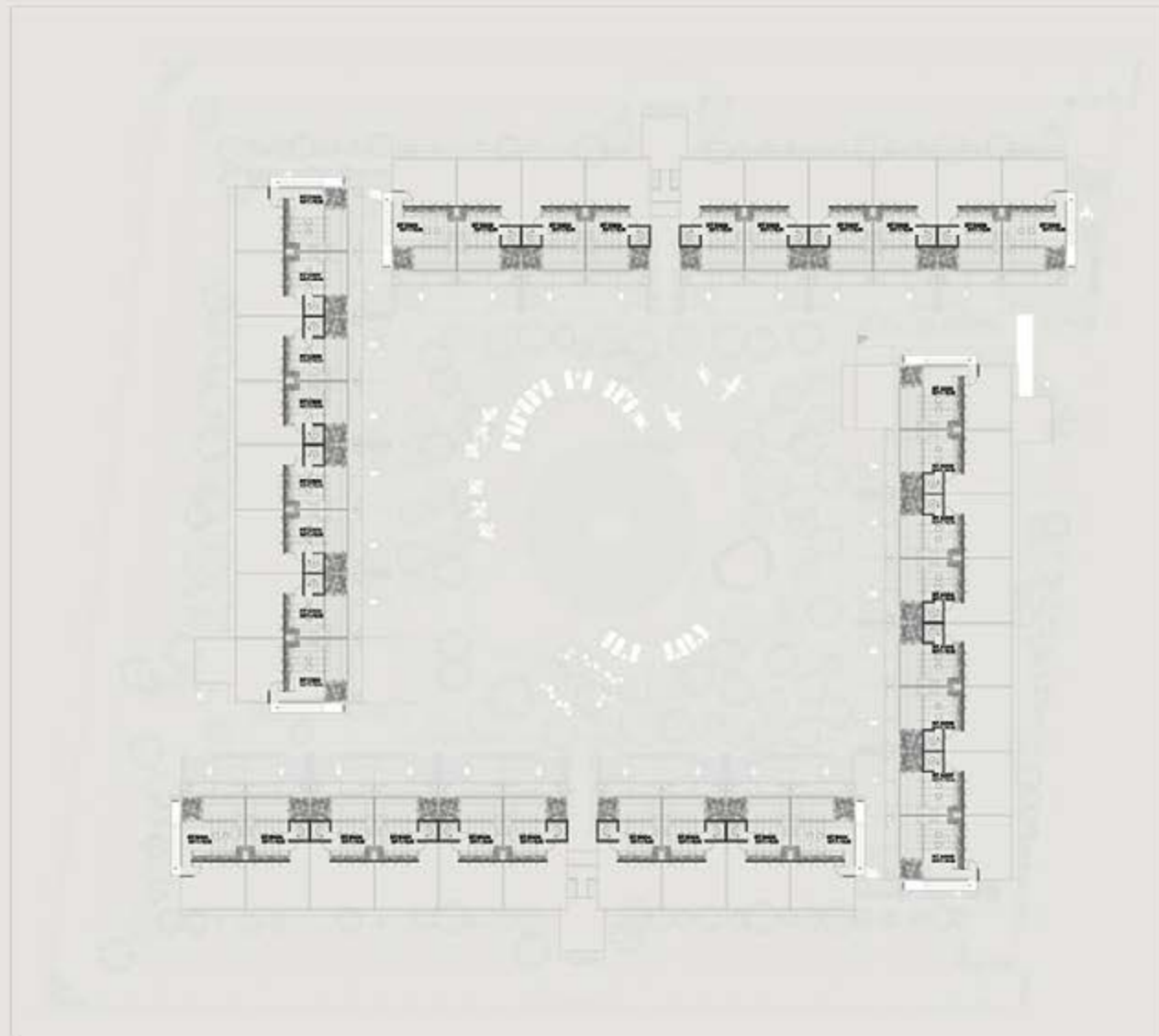


BAÑO

TERCER NIVEL



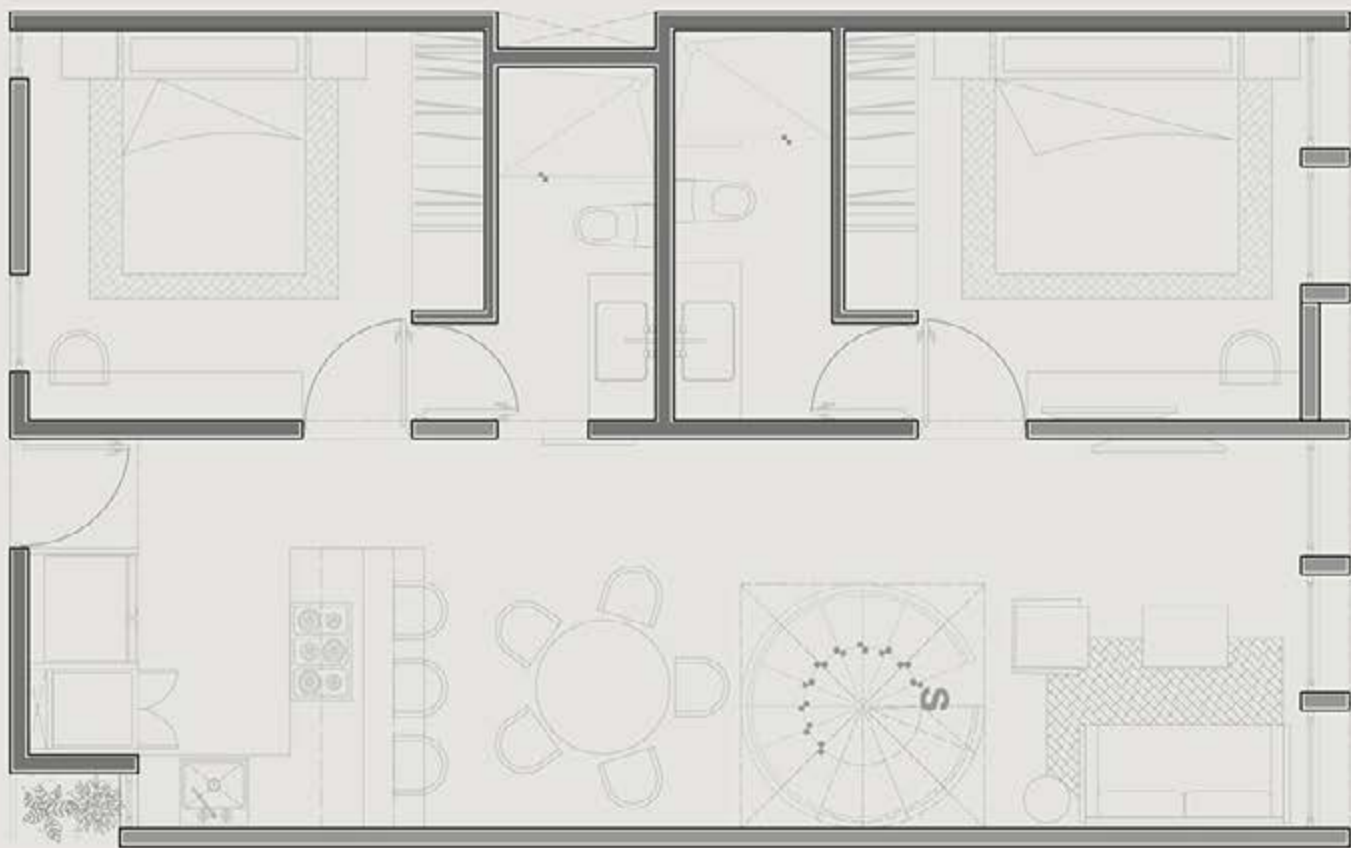
ROOFTOP





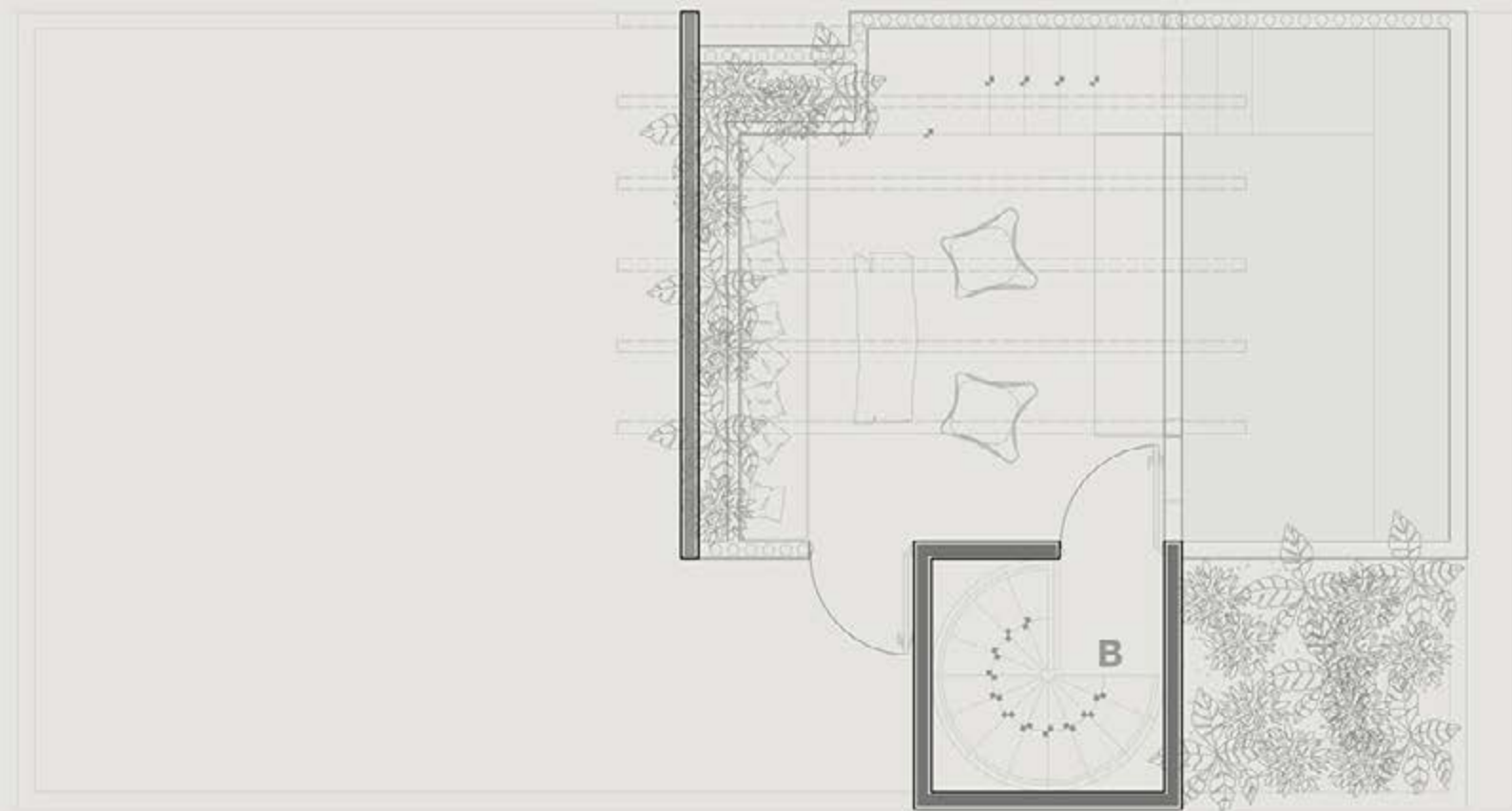
PENTHOUSE

PENTHOUSE



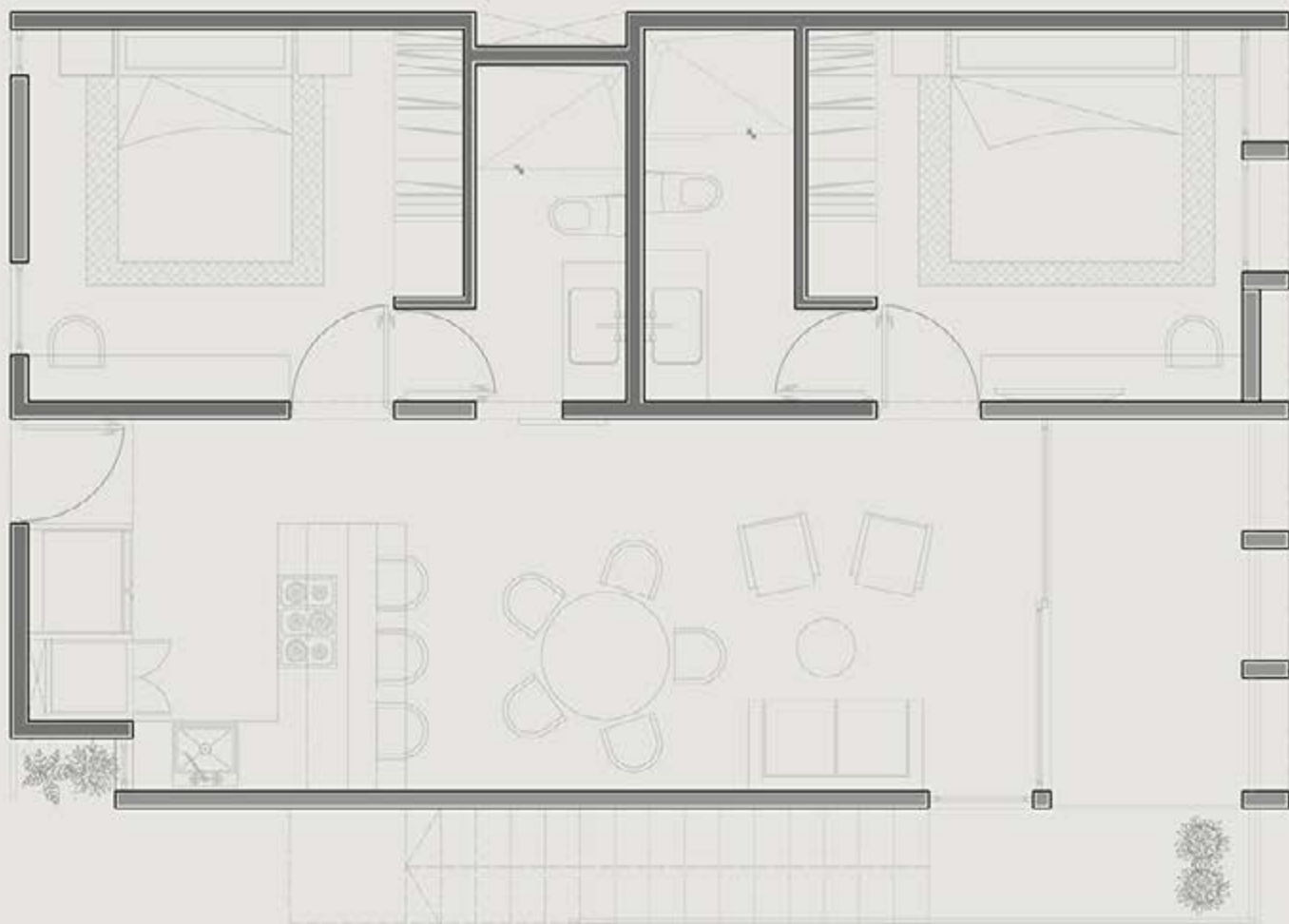
73.1 m² Interiores
36.5 m² Rooftop

ROOFTOP



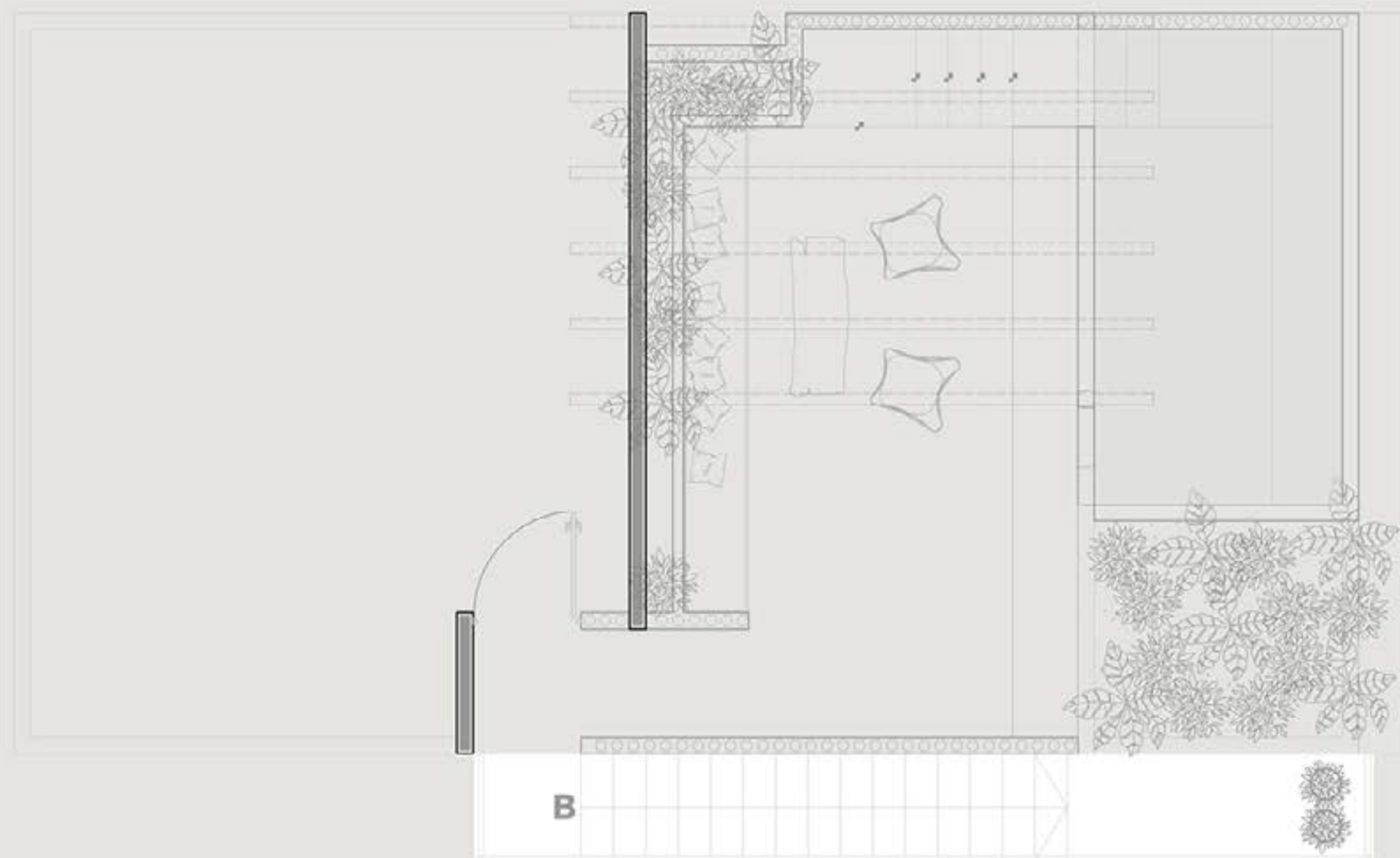
73.1 m² Interiores
36.5 m² Rooftop

PENTHOUSE



67.9 m² Interiores
5 m² Terraza Interior
36 m² RoofTop

ROFFTOP



67.9 m² Interiores
5 m² Terraza Interior
36 m² RoofTop

ROOF TOP





ROOFTOP



ROOFTOP



(33) 3100 3456
contacto@dreampointbrokers.com

Este documento es de carácter ilustrativo, por lo que el proyecto final ejecutado podrá variar conforme a exigencias técnicas del mismo y de las autoridades competentes.